



TECTUL

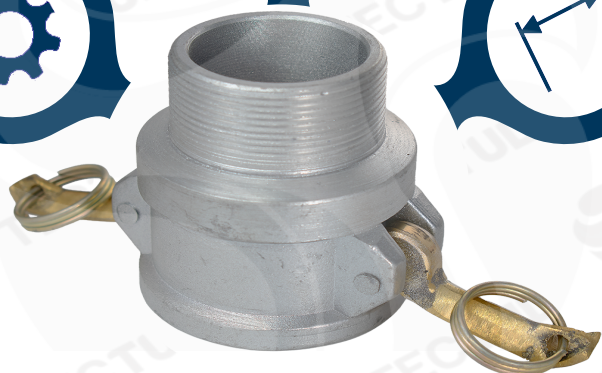
PARTE "B" EN ALUMINIO

MATERIALES

CARACTERÍSTICAS FÍSICAS



CARACTERÍSTICAS DIMENSIONALES



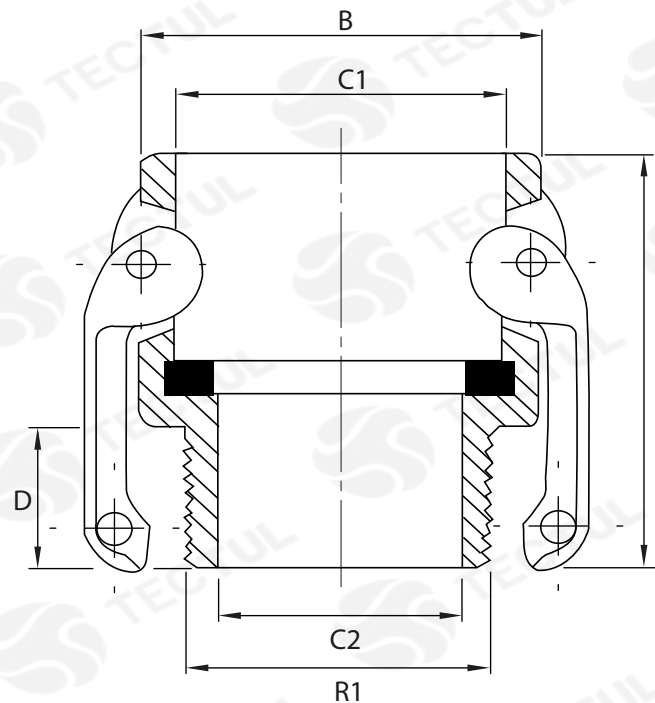
DATOS TÉCNICOS	
ATRIBUTO	DESCRIPCIÓN
Tipo de Pieza	Parte B
Cuerpo	Aluminio
Empaque	Buna / Nitrilo
Manivela	Bronce
Anillos de Sujeción	Acero al Carbon Plateado en Zinc
Rango Máximo de Presión	1/2" - 4" 150 PSI / 5" - 6" 75 PSI / 8" PSI
Temperatura	Ambiente
Características	Aleación de aluminio, diseñada especialmente para alta resistencia a la tensión, ligereza y rigidez.
Tipo de Rosca	NPT (Cónica - Rosca Tubería Nacional)
Conexión	Hembra - Rosca NPT Macho

* Fotos y medidas referenciales, sujetas a cambios sin previo aviso por parte del proveedor o fabricante.

DATOS TÉCNICOS

MEDIDA ROSCA [In] (R1)	DIÁMETRO EXTERNO [mm] (B)	DIÁMETRO INTERNO 1 [mm] (C1)	DIÁMETRO INTERNO 2 [mm] (C2)	ALTO ROSCA [mm] (D)	ALTURA [mm] (E)	PESO (g)
1/2"	32,50*	25,00*	13,00*	17,50*	31,40*	56*
3/4"	42,60*	32,00*	19,00*	18,50*	38,00*	86*
1"	47,80*	37,00*	23,10*	22,60*	41,50*	177*
1 1/4"	58,40*	47,00*	30,00*	25,01*	48,50*	226*
1 1/2"	65,00*	54,20*	35,50*	27,20*	50,80*	350*
2"	78,00*	64,00*	47,60*	32,50*	54,00*	431*
2 1/2"	91,00*	76,30*	55,00*	32,50*	55,50*	491*
3"	108,00*	91,50*	74,80*	43,00*	60,00*	745*
4"	135,70*	120,00*	95,00*	34,55*	60,00*	988*

* Fotos y medidas referenciales, sujetas a cambios sin previo aviso por parte del proveedor o fabricante.



Última Revisión: Octubre 2021



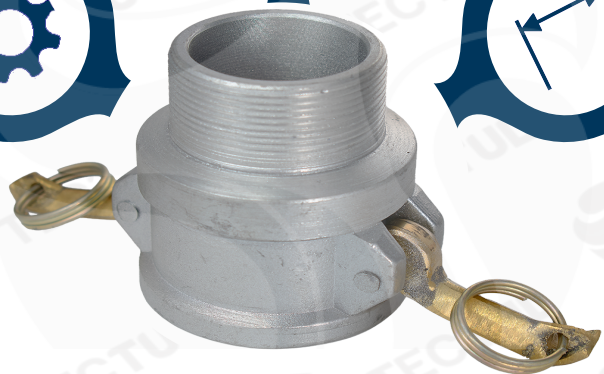
TECTUL

ALUMINUM PART "B"

MATERIALS

PHYSICAL CHARACTERISTICS

DIMENSIONAL CHARACTERISTICS

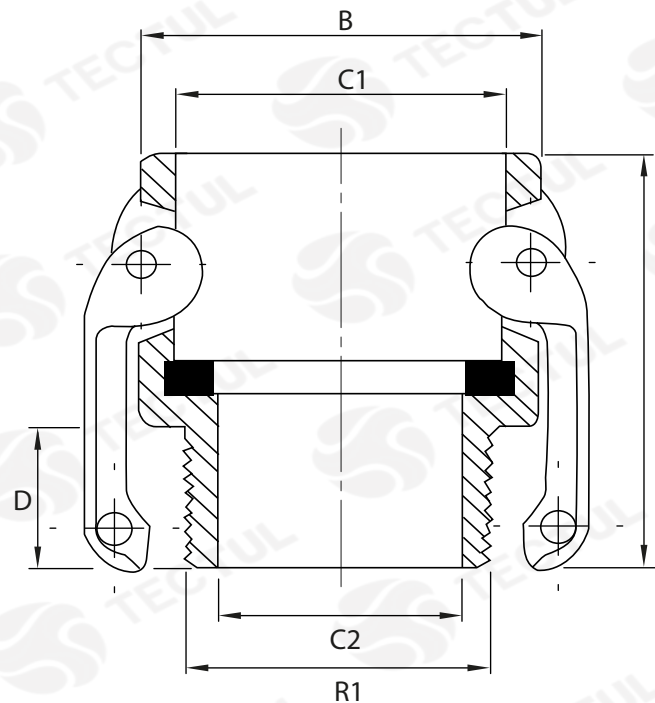


TECNICAL DATA						
THREAD SIZE [In] (R1)	EXTERNAL DIAMETER [mm] (B)	INTERNAL DIAMETER 1 [mm] (C1)	INTERNAL DIAMETER 2 [mm] (C2)	HIGH THREAD [mm] (D)	HEIGHT [mm] (F)	WEIGHT (g)
1/2"	32,50*	25,00*	13,00*	17,50*	31,40*	56*
3/4"	42,60*	32,00*	19,00*	18,50*	38,00*	86*
1"	47,80*	37,00*	23,10*	22,60*	41,50*	177*
1 1/4"	58,40*	47,00*	30,00*	25,01*	48,50*	226*
1 1/2"	65,00*	54,20*	35,50*	27,20*	50,80*	350*
2"	78,00*	64,00*	47,60*	32,50*	54,00*	431*
2 1/2"	91,00*	76,30*	55,00*	32,50*	55,50*	491*
3"	108,00*	91,50*	74,80*	43,00*	60,00*	745*
4"	135,70*	120,00*	95,00*	34,55*	60,00*	988*

* Reference photos and measurements, subject to change without prior notice from the supplier or manufacturer.

TECNICAL DATA	
ATTRIBUTE	DESCRIPTION
Part Type	Part B
Body	Aluminum
Packing	Buna / Nitrile
Crank	Bronze
Clamp Rings	Zinc Plated Carbon Steel
Maximum Pressure Range	1/2 " - 4" 150 PSI / 5 "-6" 75 PSI
Temperature	Environment
Features	Aluminum alloy, specially designed for high tensile strength, lightness and rigidity.
Thread Type	NPT (Conical - National Pipe Thread)
Connection	Female - Male NPT Thread

* Reference photos and measurements, subject to change without prior notice from the supplier or manufacturer.



Last Revision: October 2021