



TECTUL

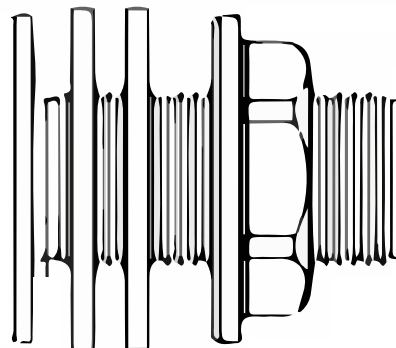
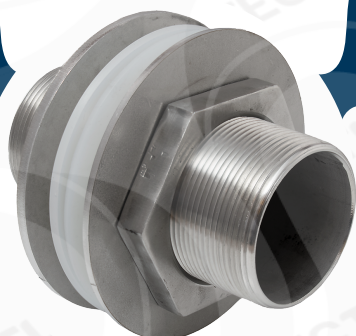
PASAMURO INOXIDABLE

MATERIALES

CARACTERÍSTICAS FÍSICAS



CARACTERÍSTICAS DIMENSIONALES



* Vista de sección transversal de tipo informativa. No representa una versión específica del accesorio o elemento.



MATERIALES

Fabricados en acero inoxidable
ASTM 351 CF8 (304)



CARACTERÍSTICAS FÍSICAS

Recomendado para la conducción de vapor, gases, ácidos. Uso agroindustrial, procesos de alimentos y azucareras



CARACTERÍSTICAS DIMENSIONALES

Dimensiones básicas según la Norma Nacional estadounidense. Con conexión roscada NPT según ANSI/ASME B1.20.1

DATOS TÉCNICOS

ARANDELA LISA INOXIDABLE	ARANDELA ROSCADA INOXIDABLE	NIPLE INOXIDABLE TODO ROSCA	EMPAQUE PASAMURO - SILICONA (2 UND)	PESO (g)
1/2"	1/2"	1/2" X 4"	1/2"	245*
3/4"	3/4"	3/4" X 4"	3/4"	383*
1"	1"	1" X 4"	1"	557*
1-1/4"	1-1/4"	1-1/4" X 4"	1-1/4"	806*
1-1/2"	1-1/2"	1-1/2" X 4"	1-1/2"	1012*
2"	2"	2" X 4"	2"	1291*

* Fotos y medidas referenciales, sujetas a cambios sin previo aviso por parte del proveedor o fabricante.



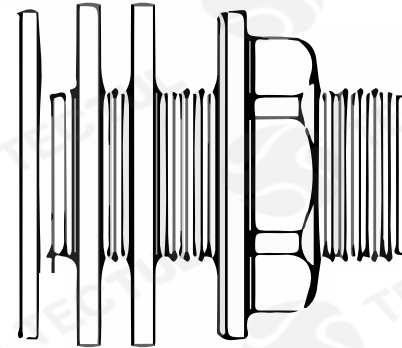
TECTUL

STAINLESS PASAMURO

MATERIALS

PHYSICAL CHARACTERISTICS

DIMENSIONAL CHARACTERISTICS



* Informational cross-sectional view. Does not represent a specific version of the accessory or item.

MATERIALS

Made of stainless steel
ASTM 351 CF8 (304)

PHYSICAL CHARACTERISTICS

Recommended for driving steam, gases, acids. Agro-industrial use, food and sugar processing

DIMENSIONAL CHARACTERISTICS

Basic dimensions according to the Standard National American. With threaded connection NPT per ANSI/ASME B1.20.1

TECHNICAL DATA				
STAINLESS STEEL WASHER	STAINLESS THREADED WASHER	NIPLE ALL STAINLESS THREAD	GASKET - SILICONE (2 UNIT)	WEIGHT(g)
1/2"	1/2"	1/2" X 4"	1/2"	245*
3/4"	3/4"	3/4" X 4"	3/4"	383*
1"	1"	1" X 4"	1"	557*
1-1/4"	1-1/4"	1-1/4" X 4"	1-1/4"	806*
1-1/2"	1-1/2"	1-1/2" X 4"	1-1/2"	1012*
2"	2"	2" X 4"	2"	1291*

* Reference photos and measurements, subject to change without prior notice from the supplier or manufacturer.