



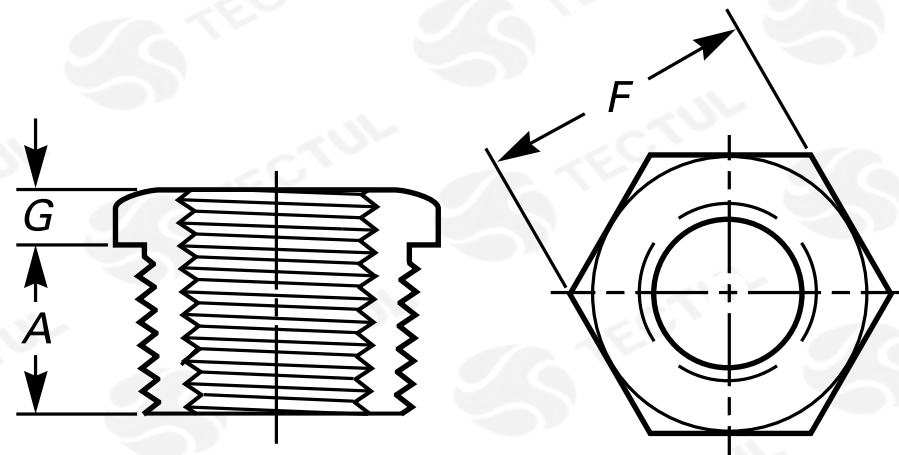
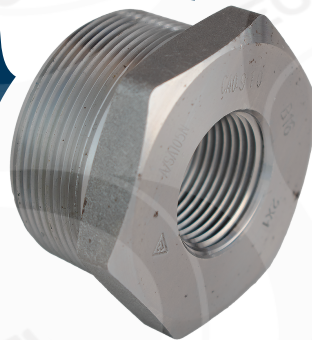
TECTUL

BUSHING CABEZA HEXAGONAL CLASE 3000

MATERIALES

CARACTERÍSTICAS FÍSICAS

CARACTERÍSTICAS DIMENSIONALES



* Vista de sección transversal de tipo informativa. No representa una versión específica del accesorio o elemento.

DATOS TÉCNICOS

MEDIDA	ALTURA [mm] (A)	ANCHO ENTRE ARISTAS [mm](G)	ANCHO ENTRE ARISTAS [mm] (F)	MEDIDA	ALTURA [mm] (A)	ANCHO ENTRE ARISTAS [mm](G)	ANCHO ENTRE ARISTAS [mm] (F)
3/8" X 1/4"	13,00*	4,00*	18,00*	2" X 1/2"	22,00*	9,00*	65,00*
1/2" X 1/4"	14,00*	5,00*	22,00*	2" X 3/4"	22,00*	9,00*	65,00*
1/2" X 3/8"	14,00*	5,00*	22,00*	2" X 1"	22,00*	9,00*	65,00*
3/4" X 1/4"	16,00*	6,00*	27,00*	2" X 1-1/4"	22,00*	9,00*	65,00*
3/4" X 3/8"	16,00*	6,00*	27,00*	2" X 1-1/2"	22,00*	9,00*	65,00*
3/4" X 1/2"	16,00*	6,00*	27,00*	2-1/2" X 1"	22,00*	10,00*	75,00*
1" X 1/4"	19,00*	6,00*	36,00*	2-1/2" X 1-1/2"	27,00*	10,00*	75,00*
1" X 1/2"	19,00*	6,00*	36,00*	2-1/2" X 2"	27,00*	10,00*	75,00*
1" X 3/4"	19,00*	6,00*	36,00*	3" X 1-1/2"	28,00*	10,00*	90,00*
1-1/4" X 1/2"	21,00*	7,00*	46,00*	3" X 2"	28,00*	10,00*	90,00*
1-1/4" X 3/4"	21,00*	7,00*	46,00*	3" X 2-1/2"	28,00*	10,00*	90,00*
1-1/4" X 1"	21,00*	7,00*	46,00*	4" X 2"	32,00*	13,00*	115,00*
1-1/2" X 1/2"	21,00*	8,00*	50,00*	4" X 2-1/2"	32,00*	13,00*	115,00*
1-1/2" X 3/4"	21,00*	8,00*	50,00*	4" X 3"	32,00*	13,00*	115,00*
1-1/2" X 1"	21,00*	8,00*	50,00*				
1-1/2" X 1-1/4"	21,00*	8,00*	50,00*				

* Fotos y medidas referenciales, sujetas a cambios sin previo aviso por parte del proveedor o fabricante.

MATERIALES

Fabricados en acero forjado
ASTM A105

CARACTERÍSTICAS FÍSICAS

Posee extremos reforzados. Ideal para la
conduccion de gases, petróleo,
lubricantes, vapor y aceites industriales.

CARACTERÍSTICAS DIMENSIONALES

Dimensiones básicas según la Norma
Nacional estadounidense. Con conexión
roscada NPT según ANSI/ASME B1.20.1



TECTUL

OUTSIDE HEX BUSHING CLASS 3000

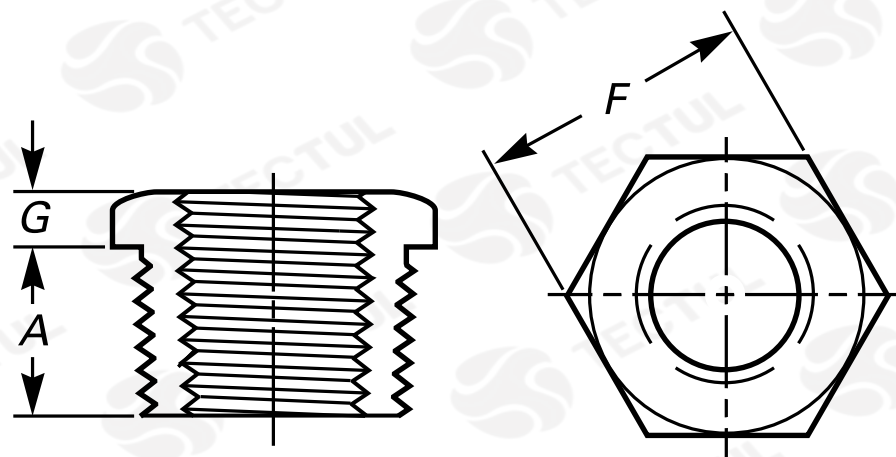
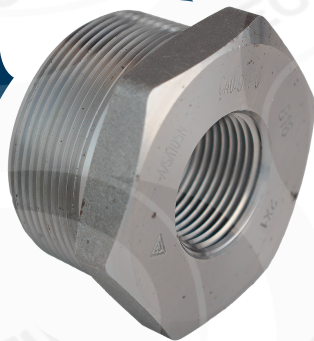
MATERIALS



PHYSICAL CHARACTERISTICS



DIMENSIONAL CHARACTERISTICS



* Informational cross-sectional view. Does not represent a specific version of the accessory or item.

TECHNICAL DATA

MEASURE	HEIGHT [mm] (A)	WIDTH BETWEEN EDGES [mm] (G)	WIDTH BETWEEN EDGES [mm] (F)	MEASURE	HEIGHT [mm] (A)	WIDTH BETWEEN EDGES [mm] (G)	WIDTH BETWEEN EDGES [mm] (F)
3/8" X 1/4"	13,00*	4,00*	18,00*	2" X 1/2"	22,00*	9,00*	65,00*
1/2" X 1/4"	14,00*	5,00*	22,00*	2" X 3/4"	22,00*	9,00*	65,00*
1/2" X 3/8"	14,00*	5,00*	22,00*	2" X 1"	22,00*	9,00*	65,00*
3/4" X 1/4"	16,00*	6,00*	27,00*	2" X 1-1/4"	22,00*	9,00*	65,00*
3/4" X 3/8"	16,00*	6,00*	27,00*	2" X 1-1/2"	22,00*	9,00*	65,00*
3/4" X 1/2"	16,00*	6,00*	27,00*	2-1/2" X 1"	22,00*	10,00*	75,00*
1" X 1/4"	19,00*	6,00*	36,00*	2-1/2" X 1-1/2"	27,00*	10,00*	75,00*
1" X 1/2"	19,00*	6,00*	36,00*	2-1/2" X 2"	27,00*	10,00*	75,00*
1" X 3/4"	19,00*	6,00*	36,00*	3" X 1-1/2"	28,00*	10,00*	90,00*
1-1/4" X 1/2"	21,00*	7,00*	46,00*	3" X 2"	28,00*	10,00*	90,00*
1-1/4" X 3/4"	21,00*	7,00*	46,00*	3" X 2-1/2"	28,00*	10,00*	90,00*
1-1/4" X 1"	21,00*	7,00*	46,00*	4" X 2"	32,00*	13,00*	115,00*
1-1/2" X 1/2"	21,00*	8,00*	50,00*	4" X 2-1/2"	32,00*	13,00*	115,00*
1-1/2" X 3/4"	21,00*	8,00*	50,00*	4" X 3"	32,00*	13,00*	115,00*
1-1/2" X 1"	21,00*	8,00*	50,00*				
1-1/2" X 1-1/4"	21,00*	8,00*	50,00*				

* Reference photos and measurements, subject to change without prior notice from the supplier or manufacturer.



MATERIALS

Made of forged steel
ASTM A105



PHYSICAL CHARACTERISTICS

It has reinforced ends. Ideal for
conduction of gases, oil, lubricants,
steam and industrial oils.



DIMENSIONAL CHARACTERISTICS

Basic dimensions according to the Standard
National American. With threaded
connection NPT per ANSI/ASME B1.20.1